

Woodturners of North Texas

A CHAPTER OF THE
AMERICAN ASSOCIATION OF WOODTURNERS

September 2009 Program:

Don't Avoid The Voids!

by Mike Jones

Next Meeting:

Thursday,
September 24, 2009
Start Time: 6:30 PM

R. D. Evans Recreational
Center
3242 Lackland Rd.
Fort Worth, TX

Inside This Issue

This Month's Program	1
Making Good Shavings	2
Bring Back Winners	5
New Members	5
Robert Rosand	6
From the Editor	6
SWAT News	7
Advertisements	8
Calendar	8
Club Officers	8



My inspiration comes from my love of nature and the outdoors. Each turning represents an opportunity to experience a beauty of the trees seldom seen by most. I work with each piece carefully, watching and listening for how the wood wants to express itself in its new form. Shape, texture, and finish are all determined as the new creation unfolds into its own unique vessel. The greatest joy then comes from sharing these vessels with others.



Turning wood with defects is something that a turner may find hard to avoid. Using found wood, wood donated by friends, or going and cutting your own almost ensures that you're going to end up with wood in your turning pile that is less than kiln-dried perfection. So what do you do with those less than perfect specimens - especially those with gaping holes or highly contoured surfaces that aren't straight 4x4s?

skills that a turner can use to deal with voids in wood being turned. Some of those strategies include:

Walk Away – Sometimes the nature of the void in the wood is such that there are no viable options that allow the wood to be turned safely. Please note that "safely" is a somewhat relative term and is impacted by the turner's equipment, skill, experience, and the quality of the turning blank. A turner should not turn wood in

continued on page 3

There are many strategies and



President's message
by Dave Marshall

... making
Good
Shavings

There have been a lot of distractions in and around my shop lately that have precluded me from doing that which is all important ... you got it – woodturning.

College football kicked off this past weekend, which makes it hard to turn. I had to stop and dust off the shop TV and then fire up the cable box to make sure I didn't miss any of the gridiron excitement. Well, I haven't had the shop visual entertainment system on in a number of months, possibly since the college hoops season ended. Like I said; I had to dust the heck out of it – or off of it. Then, I learned that AT&T U-verse now offers a multi-view sports channel where you can watch all the different action on one TV (kind of like Picture-in-Picture, but on steroids). So, all that took about an hour away from my turning time to play with, ahem ... *learn* that.

I started to do some turning, and then got caught up in that Ohio/Navy game. So that I wouldn't be named this month's Safety Officer, I turned off the lathe to focus on the game. And wouldn't you know it; I accidentally dropped the remote and couldn't find it for awhile in all the dust and shavings on the floor. I looked around the shop and realized that it was a mess (even though my wife has been telling me this for months – she just doesn't understand my creative process.) I thought it'd be safer to clean while watching the games rather than turning and watching the games. About four hours later, the shop is relatively picked up; the tools have

been put away and the walls, shelves, and floor have been "blown out" multiple times.

Since many of the games are now over for the day, I surf over to a rerun of a Seinfeld episode while I try to cool off and wash down all that dust in my throat with a carbonated beverage (another reason not to turn, now.) Seinfeld ... I don't know if you like the show or not, but I still find it funny. Kramer cracks me up and the premise of the show – a show about nothing – is classic.

Speaking of which – no, not "classic", but rather "nothing" – this month's demonstrator is our Club's own Mike Jones. I think that Mike plans to show us how to turn nothing. Or rather something that surrounds the nothing ... I think. Maybe he doesn't plan to show us much of anything with his demo titled "Don't Avoid the Void." Whatever the case may be, I'm sure that it'll be an entertaining and interesting evening ... about nothing. Make sure that you get there early so you can avoid those seats at front and center where I'm sure that nothing won't fly off the lathe and hit you.

I hope that you haven't been too distracted from your turning this past month to turn a few bowls for our Club philanthropy – Empty Bowls. That's an interesting segue. Here we are talking about "nothing" when we have citizens in our community that

continued on page 4

Don't Avoid The Voids ... (continued from page 1)

which they feel unsafe to be around. Better to be safe than sorry. Ask any turner in our club for a scary story about the one that got away.

Blank Trimming – One of the most obvious ways to deal with voids is to minimize them or remove them when preparing the blank for turning. Many times you can isolate most, if not all, of the void by using either a chainsaw or a band saw. But be careful, you may be cutting away some of the nicest features the wood has to offer.



Turn It Off – Sometimes the nature of the blank lends itself to minimizing the void, and reducing its effect on the finished piece, by simply turning the void away on the lathe. This is effectively accomplished by turning the piece between centers, thus giving you a wide variety of options for repositioning the piece before more restrictive chucking methods are employed.

Focus On It – Some woods look boring, to me, when in a perfectly healthy state and they only get interesting with the presence of dramatic rot, water damage, insect infestation, or impressive cracks and voids. In these cases, choose to highlight the voids in the turning. With a sense of balance between positive and negative space, you will effectively use the natural effect of the “imperfections” to create a dramatic piece.

Turning Wood with Voids Safely

Special care needs to be taken when attempting to turn a piece of wood with considerable voids. Some of the items mentioned below

are good to observe during any type of turning while, others are more common only with defective wood.

Face Protection – Notice I didn't say “eye” protection! The occurrence of flying debris is almost guaranteed when turning wood that contains defects. Simple eye protection is not enough -- get your whole face covered! Even a smock that comes up around the neck is a helpful protection from flying bark, rotted wood, or dirt clods.

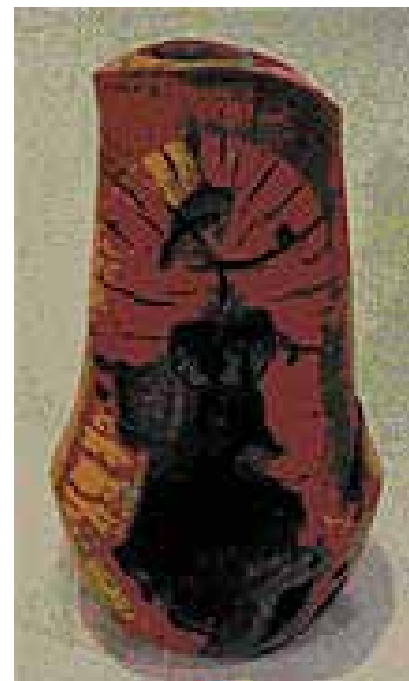


Hand Protection

– Since much of your cutting will be through bark, rotted wood, or around sharp cracked areas, wearing quality turning gloves is a good idea as debris leaving the lathe near your hands can be pretty brutal. I recommend using an open fingered glove that allows good “feel” and control of the tools while protecting the majority of your hand.

Lung Protection

– Dust is always a threat to the turner and we need to continually remind ourselves of this nuisance. However, turning decomposing wood adds the additional factor of possibly releasing harmful and irritating fungus spores and bacteria into the air. Inhaling the spores and/or bacteria may severely impact the turner's health. Use appropriate respiration protection during all turning.



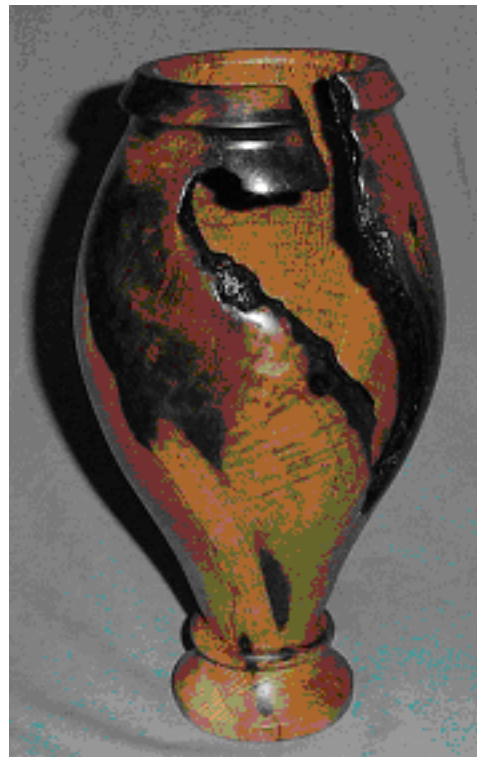
continued on page 4

Don't Avoid The Voids ... (continued from page 3)

Loose Clothing/Long Hair – It is never a good idea to wear loose hair or loose clothing (unfastened arm sleeves, un-tucked shirttails, etc.) around turning wood, due to the likelihood of the material being caught in the piece. This is especially true when the turning blank has uneven surfaces and voids that may attract airflow into and through the turning wood. Fasten long hair into a cap and secure sleeves and shirttails before turning.

Sharp Tools – Since much of the turning in wood with voids involves making interrupted cuts where first wood and then void is presented to the tool as the piece rotates, it is extremely important to use well-sharpened tools. A sharp tool cuts easier and requires less pressure to get a shaving than a dull tool. When a tool gets dull, additional pressure is required for it to cut. This additional pressure has the devastating effect of pushing the tool into the void and causing dramatic catches. Sharp tools and an easy touch are good safety ideas for any turning project but are especially critical when turning wood with voids.

Allergy Protection – Many turners realize there are specific woods that cause allergic reactions when they are turned. Please learn which woods adversely affect you and take appropriate precautions.



Vibration – When turning wood with voids, unwanted vibration is inevitable. Make

continued on page 5

Making Good Shavings ... (continued from page 2)

have virtually nothing to eat themselves. Let us help the Tarrant County Food Bank help them. Let's all get out to the shop and turn at least one bowl to support this worthy cause.

SWAT takes place next month in Wichita Falls, October 16-18! I can't say *nothing* about that because this is going to be *something*! The national turner line-up, as well as the line-up of local turners, looks great. Please register as soon as possible and make those hotels reservations too as space will be limited and attendance expected to be high. Visit <http://www.swaturners.org/welcome/welcome.shtml> to review the featured turners and to register online. Also, on our website, we have posted the Room and Demonstrator schedule and ask that those of you that are attending SWAT to review the schedule for Room #5, which we are hosting. We need volunteers to run the two video cameras and camera switcher box for each session. Some of you are already signed up and I want to say thanks to Glynn, Sandy, Gene, and Chandler for jumping on this. Now, the rest of you need to email me with your preferred time slots.

Grapevine's "End of Summer" philanthropy takes place September 26 out at Lake Grapevine. Please put this on your calendar. Details and a map are forthcoming on the website.

We have a "short" month this month and our meeting is on September 24th. Because you haven't been distracted in the shop like me, bring some of your latest turnings to show us on the Critique Table. And if you have won a Bring-Back Raffle item and haven't settled up your debt, please do so! The Club counts on **you** to make sure the raffle table is stocked with quality turnings and supplies.

Good shavings to all,

Dave



Don't Avoid The Voids ... (continued from page 4)

sure your lathe is anchored as best you can before turning. Never turn your lathe on at an unsafe speed. The vibration can rip the piece from your lathe in the blink of an eye. For those with adjustable speed controls, start off with the piece stopped and increase the speed to a comfortable turning speed. Sometimes you need to speed up or "spin past" a place of destructive harmonics. This is when the rotation cycles and the mass of the wood work with each other to create the most intense vibration. Sometimes a slight increase of the turning speed will get past this amplification of vibration. But be careful! Higher speeds also mean greater centrifugal forces that can cause the project to leave the lathe without your permission to do so.



New Members

Blake Oglesby – Haslet

Robert Richards – Cedar Hill

Cecil Wester – Granbury

Kelton Cloud – Granbury

Ray Moyer – Euless

Earl Myers – Cleburne

Chas Thornhill – Frisco

Welcome back: Paul Tiefel - Southlake

“Bring-Back” Drawing Winners

Don't forget that if you were a winner of any item in the August 2009 drawing, you are obligated to bring a replacement item for the September 2009 “Bring Back” drawing. The rules have changed and you can see the “Making Good Shavings” column in the March 2009 newsletter for updated guidelines on the “Bring Back” drawing. Winners of any turned item should bring back a replacement turned item of their own creation to the next meeting and winners of any other item such as tools or wood are encouraged to also bring a turned item that they have created in lieu of a non-turned item. If you have fallen behind in bringing a replacement item for the “Bring Back” drawing, now is the time to make up for any items that you owe and please remember to bring a turning to the August meeting.

Name =====	Description =====
Tom Beatty (2x)	small bud vases, inverted bowl
Ned Baker	Bowl
Dewayne Hines	square winged bowl
Jim Humphry	pen
Bill Boehme	pen
Stormy	whistle
Alton Bostick	triangular winged bowl
Bob Stroud	pen blanks



Robert Rosand
scheduled to be

WNT Hands-on Demonstrator for April 2010



Professional Woodturner and instructor, Bob Rosand, has agreed to be our "hands-on" Demonstrator/Instructor next Spring, April 17 - 22, 2010.

If you are not familiar with Bob Rosand and his work, you can find information about him on his web site at: <http://www.rrosand.com>.

His video "Turning Projects from Scrap" is a classic and one that I would highly recommend to any turner, beginner or advanced. If you are an AAW member, the DVD or VHS tape sells for \$19.00 on the AAW web site at <http://www.woodturner.org>.

Bob primarily turns small to medium sized objects that can be completed in a relatively short period of time. He is recognized as an excellent teacher and demonstrator. His style of demonstrating and teaching is an easy going, relaxed presentation that puts everyone at ease and promotes confidence in the student. Whether a person is an absolute beginner at woodturning or very advanced, having instruction from Bob Rosand will be a very worthwhile experience that you won't forget. Class sizes are very limited so be prepared to sign up early next spring. Further details will be announced in the coming months.

-- John Horn



... from the
Editor

As your new editor of the newsletter, I first want to express my thanks to Bill Boehme for the great job he has done on the newsletter since he took over the task. He put in a lot of time and effort into creating a classy newsletter every month. He had a good eye for layout and colors. I can only promise to try to live up to the standards he set. I am fortunate that he has been able to show me the basics of how the newsletter goes together; otherwise, I would be fumbling around and lost putting this edition together. Again, I feel we owe a big thanks to Bill. (Hey Bill, is that good enough for the \$1 you promised?)

I would like to encourage everyone to consider helping the club out by writing an article for the newsletter. The subject could be on anything you feel would help your fellow club members, such as specific techniques that have helped you in turning, finishing, resawing, gluing ... any aspect of woodworking you feel would be of interest. Tips and helpful hints would also be appreciated. You never know when some trick you know and take for granted might be just the tip someone needs to help them finish a project.

In closing, would like to encourage you to not only turn some items for the critique table but also turn something for the bring-back raffle table. And please turn some bowls for the Empty Bowls Project. And seriously, Bill, thanks for your hard work.

JVC



SWAT 2009 October 16 - 19 Wichita Falls



Now is the time to begin making your plans for the South-west Association of Turners Woodturning Symposium in Wichita Falls, Texas. As in the past, the event will take place at the very nice Multipurpose Events Center and the dates are October 16 through 18.

SWAT is the nation's largest regional woodturning symposium and this year it will feature the following six nationally and internationally recognized woodturners: Stuart Batty, Mike Mahoney, Jimmy Clewes, Jamie Donaldson, Michael Mocho, and Stephen Hatcher. In addition, there will be fourteen regional turners. And as always, the vendor area will be stocked with all of your favorite toys from sandpaper to "big boy" lathes.

SWAT provides an excellent opportunity to expand your woodturning knowledge, get some hands-on woodturning tutoring from knowledgeable volunteers, meet other woodturners from faraway lands (like Oklahoma or Houston), and buy a few necessities. You can even update your wardrobe with some new SWAT logo shirts. On top of this, there are drawings for lots of neat stuff at the great banquet on Saturday night and following lunch on Sunday, a lathe will be given away (a Powermatic 3520 for the past several years).

A part of the symposium that is always worth visiting is the Instant Gallery -- a collection of turnings by attendees as well as the demonstrators. Attendees are encouraged to bring at least one of their favorite turnings. Those

who are new to turning are encouraged to bring some of their favorite work to display. You can register online and get further details at <http://www.swaturners.org>.



**TRICK
OR
TREAT**



It has become a tradition that we ask each of our members to bring two bags of individually wrapped Halloween candy to donate to the R.D. Evans Community Center for their community children's Halloween party that will be held on October 31.

Please remember to bring your candy donation to either our next meeting on Thursday, September 24, or our October meeting on Thursday, October 29.

Advertisements

Anchorseal®

The club has purchased a 55-gallon drum of Anchorseal sealant for green wood and it is available to members for \$9.00 per gallon. It can be purchased at club meetings and at other times is being stored at Jimmie Gill's place, 3425 Meadow Oaks Dr. in Haltom City. Contact James Haynes for payment.

See the [WNT website ads page](#) for the latest information on what other members have for sale.

Rules for advertisements: Free ads are available only to WNT members. The deadline for submission or cancellation of an ad is the 10th of the month to be placed in that month's newsletter. Ads will only run for one issue unless notified otherwise. If you wish to continue running an ad for more than one month, please advise the editor, Bill Boehme, by the 10th of the month. Also, if you decide to cancel an ad, please notify the editor by the 10th of the month.



Calendar

NOTE: The Regular Monthly Meetings are held on the last Thursday of each month at the R. D. Evans Recreational Center, 3242 Lackland Rd., Forth Worth, Texas. Board meetings are held at **Schlotzsky's Deli**, 6422 Camp Bowie, south of I-30. Check the WNT web site for any updates. All WNT members are invited to attend. If you would like to join the group for dinner, it begins at 6 PM and the business meeting starts at 7 PM.

September 24 - Regular Monthly meeting 6:30 PM, R. D. Evans Rec. Center, Demonstrator: **Mike Jones -- Turning Negative Space**

October 6 - WNT Board Meeting

October 16 - 18 - SWAT Symposium, Wichita Falls, TX

October 29 - Regular Monthly meeting 6:30 PM, R. D. Evans Rec. Center, Demonstrator: **Fred Denke -- Three Cornered Vessels**

November 3 - WNT Board Meeting

November 19 - Regular Monthly meeting 6:30 PM, R. D. Evans Rec. Center, Demonstrator: **Randy Johnson -- Pen Turning**

December 12 - Holiday Banquet 6:30 PM, R. D. Evans Rec. Center

Board of Directors

President – Dave Marshall

Home phone 817-738-6815

Vice President – Jim Tanksley

Home Phone 817-453-5100

Past President – Stormy Boudreaux

Home Phone 817-441-9238

Treasurer - James Haynes

Home Phone 972-223-3171

Librarian – Randy Johnson

Home Phone 817-795-6018

Activities – John Horn

Home Phone 817-485-7397

Newsletter – John Chandler

Home Phone 817-292-9978

Secretary – Terry Tanksley

Home Phone 817-453-5100

WNT WEB SITE:

<http://www.wntx.org>

The Woodturners of North Texas newsletter is published monthly. Inputs are due to the editor by the tenth of each month for inclusion in that month's newsletter.

WNT gives permission to all other AAW woodturning chapters, woodworking magazines, and newspapers to use any text material and accompanying photos or drawings contained herein for the benefit of woodturners everywhere. We ask that credit be given to the source of the material. WNT logos and graphics may not be copied without permission.

Copyright 2009,
Woodturners of North Texas